



NUTRITIONAL SCIENCES NEWS

DIVISION OF NUTRITIONAL SCIENCES

COLLEGE OF AGRICULTURAL, CONSUMER AND ENVIRONMENTAL SCIENCES

UNIVERSITY OF ILLINOIS AT URBANA-CHAMPAIGN

Vol 22, Fall 2009

A WORD FROM THE NEW DIRECTOR



Dear Friends,
Earlier this fall my appointment as Director of the Division of Nutritional Sciences began. There was no sea change, but for me and Sharon Donovan it was exciting, albeit for different reasons. I won't speak too much for Sharon, but I know she is enthusiastic about the next stage of her professional life. For sure, Sharon can look back on more than 10 years of phenomenal service to the DNS. Her accomplishments have been significant,

and under her direction the DNS achieved new heights, especially in terms of expanding the interdisciplinary nature of the Division and in securing additional resources to fund graduate student fellowships. The DNS is planning an appropriate celebration to honor Sharon's outstanding work, but for now I offer her good luck wishes and hearty congratulations for a job well done. For me it is an exciting time because the appointment represents a new challenge and an opportunity to provide leadership on a larger scale than I have previously. I joined the DNS in 1995 and have benefitted greatly from the association. My faculty colleagues are excellent, the students are second to none and alumni and friends of the Division are compassionate. I appreciate the enormous responsibility of representing the DNS and look forward to building upon the tradition of excellence. I've identified a number of items to work on such as corporate affiliations, expanding nutrition-related interdisciplinary research, increasing graduate student fellowships, and a curriculum review. Recently I spoke to faculty and students of the Division about creating the perfect storm. Not the situation described by Sebastian Junger where several unrelated meteorological events converged to produce a catastrophic Nor'easter, but the perfect storm of positive events that can occur when we work together and take advantage of our strengths to capitalize on the prospects before us. To this end, I welcome your help. The DNS operates on the goodwill of faculty, students, alumni and friends. Any suggestions for improvement are welcome. I wish you all a happy, healthy and prosperous new year and look forward to meeting you someplace down the road.

Best wishes,

Rod Johnson, Ph.D.
Director, Division of Nutritional Sciences

A WORD FROM THE FORMER DIRECTOR



As I complete my term as Director of Nutritional Sciences, I would like to extend a thank you for your support over the past decade. Being DNS Director has truly been one of the most personally and professionally fulfilling experiences of my life. I am so proud of what we have been able to achieve in terms of improving the international stature of the program, the curriculum, extramural funding and endowments and professional development opportunities for our students. *Faculty.....*Thank you for stepping forward and contributing your time and talents to the Division. As a volunteer organization, we could not do what we do without your dedication. I have been amazed over and over with the faculty's dedication to and affection for the Division. *Students and Alumni.....*Thank you for choosing to do your graduate education at the University of Illinois. You are the future leaders of our profession and it has been a pleasure observing your professional development and personal growth. *Department Heads and Deans.....*Thank you for your support of the Division. The program would not be interdisciplinary without your support and willingness to allow your faculty to participate in the Division's teaching and advising. I would like to extend a huge debt of gratitude to Bob Easter, who has been a tireless supporter of our vision for the future of DNS. *External Advisory Committee Members.....*Thank you for serving on our EAC and taking time from your busy schedules each year to attend our meeting - that action alone speaks volumes regarding the importance that you assign to our program and students. Your advice is always thoughtful and has assisted the Division in charting our course. I would like to extend a special thanks to Linda Barentin, who has made my job so much easier. You have touched hundreds of student's lives and you have been the constant in the Division over the past three DNS Directors. While we all wish you the best in your retirement - YOU WILL BE MISSED. You are one of a kind and will be irreplaceable. I would also like to acknowledge John Erdman, who has been a mentor and friend during my term as Director. He was always willing to let me "bounce things off him" regarding the Division. His dedication to the Division is clear to all and is something I hope to emulate in the future. As we enter the next "era", I wish Rod Johnson the best of luck as he steps into the role of DNS Director. He will bring a fresh perspective to the program and I hope that you give him the support that you have given me. I am confident that the Division will continue to thrive.

Sharon Donovan, Ph.D.

TABLE OF CONTENTS

Editor: Amy Lemrick-Riha

Table of Contents

Page 2	Division Web Site
Page 2	2010 Experimental Biology Reception Date

Nutritional Sciences Endowment

Page 3	Nutritional Sciences Endowment Fund
Page 4	Kraft Foods Scholar and Fellows
Page 5	2009 Endowed Student Awards

External Advisory Committee

Page 6	2009-2010 Committee Members
Page 7	EAC Reception Photos

Graduate Students

Page 8	New Students (Spring - Fall 2009)
Page 9	Graduates (August 2008 - May 2009)
Page 10	NSGSA Officers
Page 10	Margin of Excellence Travel/Research Program
Page 11	2008-2009 Fellowship Recipients
Page 11	NSGSA Faculty Award
Page 11	Abbott Nutrition Sponsors CBA
Page 12	Student Awards and Achievements
Page 13 & 14	2009 Nutrition Symposium

Student and Faculty Professional and Social Events

Page 15 & 16	Photos from Nutrition Reception at EB
Page 17	Bake-Off - July 2009
Page 17	Fall Picnic - September 2009
Page 18	Quiz Bowl - October 2009
Page 19	2009 Holiday Party
Page 19	Linda Barenthin's Reception

Faculty

Page 20	Remembering Professors Nelson and Baker
Page 21 & 22	New Division Staff Members and Faculty
Page 23	Professional Service
Page 24	Awards, Professional and Personal Achievements
Page 25	Teachers Ranked as Excellent
Page 26	New Research Funding
Page 27 & 28	Faculty Invited Talks

Alumni

Page 29 - 31	News & E-mail Addresses
--------------	-------------------------

VISIT OUR WEB SITE FOR
E-MAIL ADDRESSES OF CURRENT
FACULTY & STUDENTS
<http://www.nutrsci.illinois.edu>

If you have any comments or
suggested improvements for the
web site, contact us anytime at
nutrsci@illinois.edu

EXPERIMENTAL BIOLOGY RECEPTION

**Each year the Division hosts a
reception at the Experimental
Biology Meeting. It is a
wonderful opportunity for our
alumni to network with each
other, the faculty and current
graduate students in the
program.**

**If you will be attending the
EB 2010 meeting in
Anaheim, CA
please plan to join us at our
reception on:**

**Monday, April 26, 2010
from 7 - 9 PM at the
Hilton Anaheim
Room TBA
(ASN Headquarters)**

NUTRITIONAL SCIENCES ENDOWMENT FUND



How to make a Contribution

It is easy to make a contribution on-line. On our web site under the "Endowment Fund" tab, you will find a link, "How to Make a Contribution" (http://www.nutrsci.illinois.edu/endowment_fund/contributions.html), which will allow you to use a credit card.

Alternatively, you can send a check to the Division office. Please make the check payable to the "University of Illinois Foundation" and indicate your account preference on the check subject line or in a letter accompanying the check.

If you work in industry, please inquire whether your company participates in a matching program. Your donation is tax deductible.

The Division of Nutritional Sciences launched its Endowment Initiative in 2001 and we are very thankful to the faculty, students, alumni and friends who have supported the Division through contributions to the Endowment Fund and the Annual Fund. Your contributions are greatly appreciated and provide critical support for our students and programs. The Division of Nutritional Sciences would like to ask that you consider taking this opportunity to help secure our Brilliant Future by making a new contribution or an additional contribution to your alma mater. *Below are descriptions of the existing endowment funds in the Division.*

Nutritional Sciences Endowment Fund - is a general fund that is used to sustain and enhance the excellence of the Division of Nutritional Sciences by providing graduate students with enhanced research and professional development experiences.

Annual Fund - this fund provides unrestricted support for Nutritional Sciences.

David H. Baker Nutrition Scholar Award Fund - recognizes students who display excellence in research as documented through peer-reviewed publications, awards and research grants. During the selection of the award recipient, an emphasis will be placed on the originality and creativity of the student's research.

Toshiro Nishida Research Award Fund - provides support for travel to national and international scientific conferences. Criteria used to select the awardee include the originality and quality of the student's abstract and poster or oral presentation.

James L. Robinson Nutrition Impact Award Fund - recognizes students who display excellence in professional service through activities in the Nutritional Sciences Graduate Student Association or to promote and enhance the Division and/or nutrition at the campus, state, or national level.

Frank W. Kari Endowed Memorial Award Fund in Nutritional Sciences - will provide awards to graduate students who are enrolled in the Division of Nutritional Sciences in the College of ACES at the University of Illinois at Urbana-Champaign. The awards will be used by recipients to attend scientific conferences.

Dr. Willard J. and Priscilla F. Visek Lecture Fund - will be used to support collaborative scholarly activities in the science of nutrition at UIUC by providing funding for a lectureship, including, but not limited to, honorarium, travel, accommodations, publicity and receptions associated with the lecture. The lecture topic should emphasize the molecular basis of normal and abnormal nutrition-related processes in human beings and should take place on an annual basis.

William Rose Endowed Award Fund in Nutritional Sciences - will provide awards to graduate students who are enrolled in the Division of Nutritional Sciences in the College of ACES at the University of Illinois at Urbana-Champaign. The awards will be used by recipients to attend scientific conferences.

KRAFT FOODS HUMAN NUTRITION UNDERGRADUATE SCHOLAR AND GRADUATE FELLOWS



In 2002, Kraft Foods established a \$1M endowment in the Division of Nutritional Sciences, which provides funding for undergraduate scholars in the Department of Food Science and Human Nutrition, graduate fellows in the Division, unrestricted support for the Division and a Kraft Endowed Professorship.

The Division is extremely thankful to Kraft for their generous support of our academic programs and looks forward to our continuing interactions.

KRAFT UNDERGRADUATE SCHOLAR

The Department of Food Science and Human Nutrition selected the following undergraduate student to receive a \$2,000 Kraft Scholarship for the 2009-10 academic year.

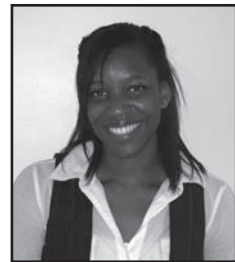
Maxine Roman

KRAFT GRADUATE FELLOWS



Emily Tomayko is originally from Columbus, GA. She completed her bachelor's degree in Dietetics from the University of Georgia in 2005, entered the Nutritional Sciences graduate program in June 2005, and is advised by Dr. Ken Wilund. The focus of her research is the effects of diet and exercise on cardiovascular/bone health and physical functioning in hemodialysis patients.

Kimberly Cephas is originally from Wilmington, Delaware. She completed her bachelor's degree in Biology with a minor in Nutrition from the University of Maryland Eastern Shores in May of 2009. She entered the Nutritional Sciences graduate program in the Fall of 2009. She is advised by Dr. Kelly Swanson. The focus of her research will be the correlation between obesity and intestinal microbiota.



Melissa Kaczmarczyk is originally from Willow Springs, Illinois. She completed her bachelor's degree in Cell and Molecular Biology at Winona State University in 2000 and her Master's degree in Public Health with an emphasis on Epidemiology at Emory University in 2007. She entered the Nutritional Sciences graduate program in 2008, and is co-advised by Drs. Greg Freund and Mike Miller. The focus of her research is immune function and the gut. She currently is interning at Abbott Laboratories in the area of inborn errors of metabolism.

THE 2009 ENDOWED STUDENT AWARDS

At the beginning of the spring semester, the recipients of the Baker, Kari, Nishida, Robinson and Rose Graduate Student Awards were announced. These awards are supported by permanent endowments established in the UI Foundation. The **David H. Baker Nutrition Scholar Award** is given annually to the most outstanding graduate student majoring in Nutritional Sciences at UIUC; the **Frank W. Kari Memorial Award, Toshiro Nishida Research Award, and the William Rose Endowed Award** are given annually to a Nutritional Sciences student at UIUC to help foster professional development by supporting travel to scientific conferences; and the **James L. Robinson Nutrition Impact Award** is given annually to the graduate student who has made the greatest extracurricular impact on the Division of Nutritional Sciences.

A cash award of \$500 is provided to the Baker and Robinson award recipients. For the Kari, Nishida and Rose awards, \$500 is provided as partial reimbursement for expenses incurred for registration and/or travel to a meeting. Each recipient's name is added to a plaque permanently displayed outside the Division office.



**David H. Baker
Nutrition Scholar Award**
Ellen Evans, David Baker,
Mina Mojtahedi



**James L. Robinson
Nutrition Impact Award**
James Robinson, Emily Tomayko,
Kenneth Wilund



**Toshiro Nishida
Research Award**
Toshiro Nishida, Radhika Ganu,
Lawrence Schook



**William C. Rose
Endowed Award**
Sharon Donovan, Nancy Engelmann,
John Erdman



**Frank W. Kari
Memorial Award**
Sharon Donovan, Nikki Ford,
John Erdman

2009-2010 EXTERNAL ADVISORY COMMITTEE

The External Advisory Committee (EAC) is comprised of leaders in industry and academia. This committee assists the Division in our quest to continually improve the quality of our program. The 2009-2010 committee members are shown below. Brian Larson, Gregory Miller, and Hugh Tucker have had their appointments extended for another three year term. We would like to acknowledge the contributions of Haile Mehansho who retired from P&G and rotated off the Committee this year. Thank you!

Dr. Mitchell S. Abrahamsen, Current Term 2007-2010.
Vice President, Research, Hills Pet Nutrition, Topeka, KS.

Dr. Arti Arora, Current Term 2008-2011.
Principal Manager, Scientific & Regulatory Affairs, The Coca-Cola Co., Atlanta, GA.

Dr. Richard M. Black, Current Term 2008-2011.
Vice President, Global Nutrition/Chief Nutrition Officer, Kraft Foods Global, Inc., Glenview, IL.

Dr. Naomi K. Fukagawa, Current Term 2008-2011.
Professor of Medicine, University of Vermont College of Medicine, Burlington, VT.

Dr. Keith A. Garleb, Current Term 2007-2010.
Director, Pediatric Nutrition R&D, Abbott Laboratories, Abbott Nutrition, Inc., Columbus, OH.

Dr. Eric J. Hentges, Current Term 2008-2011.
Executive Director, International Life Sciences Institute North America, Washington, D.C.

Dr. Brian T. Larson, Current Term 2009-2012.
Private Nutrition Consultant, Dowling, MI.



Speakers of the 2009 meeting:

Left to Right: Nikki Ford,
Margarita Teran-Garcia,
Heather Mangian

Dr. Gilbert A. Leveille, *Ad Hoc*
Senior Consultant, Scientific & Regulatory Affairs, Cargill, Inc.; Executive Director, Wrigley Science Institute, Denville, NJ.

Dr. Haile Mehansho, Current Term 2008-2011.
Research Fellow, The Procter & Gamble Company, Cincinnati, OH. (Meeting attended by Elizabeth Flickinger)



EAC Attendees of the 2009 meeting:

Left to Right: Elizabeth Flickinger, Brian Larson, Greg Paul, Christopher Cifelli, Naomi Fukagawa, Eric Hentges, Deshanie Rai, Keith Garleb

Dr. Gregory D. Miller, Current Term 2009-2012.
Executive Vice President for Science and Innovation, National Dairy Council, Rosemont, IL. (Meeting attended by Christopher Cifelli)

Dr. John F. O'Connell, Current Term 2008-2011.
Vice President R&D, Wyeth Nutritionals, Collegeville, PA.

Dr. Greg L. Paul, Current Term 2008-2011.
Global Director, Nutrition Strategy, The Solae Company, St. Louis, MO.

Dr. Hugh N. Tucker, Current Term 2009-2012.
Vice President, Global Regulatory and Scientific Affairs, Bristol-Myers Squibb, Mead Johnson & Co., Evansville, IN. (Meeting attended by Deshanie Rai)

EXTERNAL ADVISORY COMMITTEE RECEPTION

A reception for EAC members, faculty, students and administrators was held at Dr. Donovan's home on September 16, 2009. The faculty and students thank the External Advisory Committee members for their valuable contributions to our program.



Allyson Bares, Deshanie Rai,
Elizabeth Reznikov



Shannon Cope, Greg Paul,
Emily Radlowski



Naomi Fukagawa,
Elizabeth Reznikov, Jin Lu



Craig Gundersen,
Margarita Teran-Garcia



Hannah Holscher, Jennifer
Barnes, Elizabeth Flickinger



Jin Lu, Keith Garleb



Deshanie Rai,
Jennifer Woodard



Jan Robinson, Nancy
Engelmann, James Robinson



Barbara Klein,
Elvira deMejia



Gabriel Chiu, Nathan Pratt, Jon Mun,
Katherine Kerr, Krystle Zuniga



Ryan Grant, Tracy Baynard,
Ann Liu



Ryan Grant, Brian Larson,
Jon Mun



Layne Norton, Christopher Moulton,
Greg Paul



Christopher Cifelli, Nancy Engelmann

WELCOME NEW GRADUATE STUDENTS

SPRING 2009

Lillian Diaz Rios, Ph.D. candidate, B.S. 2001 in Nutrition; M.S. 2007 in Medical Sciences, University of Guanajuato, Mexico. Advised by Karen Chapman-Novakofski, Department of Food Science and Human Nutrition.

Claudia Luevano Contreras, Ph.D. candidate, B.S. 2003 in Nutrition; M.S. 2005 in Medical Sciences, University of Guanajuato, Mexico. Advised by Karen Chapman-Novakofski, Department of Food Science and Human Nutrition.

Henna Muzaffar, Ph.D. candidate, B.S. 2001 in Medical Sciences, Allama Iqbal Medical College, Pakistan; B.S. 2003 in Nutritional Sciences, minor in Marketing, and M.S. 2005 in Nutritional Sciences, University of Cincinnati, Ohio. Advised by Karen Chapman-Novakofski, Department of Food Science and Human Nutrition.

SUMMER 2009

Timothy Abbott, M.S. candidate, B.S. 2009 in Human Biology, minor in Nutritional Science, University of Wisconsin, Green Bay. Advised by Manabu Nakamura, Department of Food Science and Human Nutrition.

Kimberly Cephas, M.S. candidate, B.S. 2009 in Biology, University of Maryland Eastern Shores, Princess Ann, MD. Advised by Kelly Swanson, Department of Animal Sciences.

Grace Crowley, M.S. candidate, B.S. 2009 in Kinesiology-Athletic Training, Penn State University. Advised by Ellen Evans, Department of Kinesiology and Community Health.

Amy Elsen, M.S. candidate, B.S. 2009 in Molecular and Cellular Biology, UIUC. Advised by John Erdman, Department of Food Science and Human Nutrition.

Brendon Smith, M.S. candidate, B.S. 2009 in Applied Health Science, 2nd major in Spanish, Wheaton College, Illinois. Advised by William O'Brien, Department of Electrical and Computer Engineering.

Zuguang Wang, Ph.D. candidate, B.S. 2003 in Biological Science, Tsinghua University; M.S. 2009 in Food Science and Human Nutrition, UIUC. Advised by Schuyler Korban, Department of Natural Resources and Environmental Sciences.

NEW GRADUATE STUDENTS

Back row from left to right:

Amy Elsen, Claudia Luevano-Contreras, Timothy Abbott, Henna Muzaffar, Kimberly Cephas, Brendon Smith, Gabriel Chiu, Nathan Pratt, Zuguang Wang, Yingying Wang

Front Row:

Lillian Diaz-Rios, Jodee Johnson, Jin Lu, Elizabeth Reznikov, Jing Li

FALL 2009

Gabriel Chiu, M.S. candidate, B.S. 2007 in Animal Biology, minor in Psychology, University of California, Davis. Advised by Gregory Freund, Department of Pathology.

Dipti Dev, Ph.D. candidate, B.S. 2002 in Dietetics, SNDT University, India; M.S. 2004 in Food Nutrition & Dietetics, University of Mumbai, India. Advised by Juhee Kim, Department of Kinesiology and Community Health.

Jodee Johnson, Ph.D. candidate, B.S. 2007 in Family and Consumer Sciences, Illinois State University; M.S. 2009 in Food Science, Ohio State University. Advised by Elvira de Mejia, Department of Food Science and Human Nutrition.

Jing Li, M.S. candidate, B.S. 2009 in Food and Nutrition Science, Hong Kong University, China. Advised by Juan Loo, Department of Animal Sciences.

Jin Lu, M.S. candidate, Bachelor of Medicine 2009 in Preventive Medicine, Tianjin Medical University, China. Advised by Sharon Donovan, Department of Food Science and Human Nutrition.

Nathan Pratt, M.S. candidate, B.S. 2009 Biology, Illinois Wesleyan University, Bloomington, IL. Advised by Manabu Nakamura, Department of Food Science and Human Nutrition.

Elizabeth Reznikov, M.S. candidate, B.A. 2008 in Biochemistry and Philosophy, minor in Cell & Molecular Biology/Neuroscience, Albion College, MI. Advised by Sharon Donovan, Department of Food Science and Human Nutrition.

Yingying Wang, M.S. candidate, B.S. 2006 in Biotechnology, Hebei Teachers University, China; B.S. 2009 in Nutrition, University of Chicago. Advised by Margarita Teran-Garcia, Department of Food Science and Human Nutrition.



CONGRATULATIONS AUGUST 2008 - MAY 2009 GRADUATES

AUGUST 2008

Kristin (Reifsteck) Faust, M.S. Current Position: Dietitian Consultant, Illinois Nutrition Education and Training Program. Advisor: Kelly Tappenden, Department of Food Science and Human Nutrition.

Daina Mallard, M.S. Current Position: Dietetic Intern with OSF Saint Francis Medical Center. Advisor: Ellen Evans, Department of Kinesiology and Community Health.

Summer Porter, M.S. Current Position: Doctoral Candidate, Department of Kinesiology and Nutrition, University of Illinois, Chicago. Advisor: Karen Chapman-Novakofski, Department of Food Science and Human Nutrition.

Fatima Zapata, M.S. Current Position: Visiting Research Specialist, Department of Chemistry, University of Illinois, Urbana, IL. Advisor: Elvira de Mejia, Department of Food Science and Human Nutrition.

OCTOBER 2008

Meredith Barnes, Ph.D. (Medical Scholars Program) Current Position: M.D. Candidate, College of Medicine, University of Illinois, Urbana, IL. Advisor: Lee Beverly, Department of Animal Sciences.

Brian Lindshield, Ph.D. Current Position: Assistant Professor, Department of Human Nutrition, Kansas State University, Manhattan. Advisor: John Erdman, Jr., Department of Food Science and Human Nutrition.

Tory Parker, Ph.D. Current Position: Assistant Professor, Department of Nutrition, Dietetics and Food Science, Brigham Young University, Provo, UT. Advisor: Nicki Engeseth, Department of Food Science and Human Nutrition.

Chad Stroud, Ph.D. Current Position: Postdoctoral Fellow, University of Burgandy in Dijon, France. Advisor: Manabu Nakamura, Department of Food Science and Human Nutrition.

DECEMBER 2008

Christopher Guest, Ph.D. (Medical Scholars Program) Current Position: M.D. Candidate, College of Medicine, University of Illinois, Urbana, IL. Advisor: Gregory Freund, Department of Pathology.

Shamlee Kulkarni, M.S. Current Position: Master's Candidate, Department of Food Science and Human Nutrition, University of Illinois, Urbana, IL. Advisor: Sharon Donovan, Department of Food Science and Human Nutrition.

Laura Wardwell, M.S. Current Position: Law Student, Southern Illinois University, Carterville, IL. Co-Advised: Michael Jakoby, Department of Internal Medicine; Karen Chapman-Novakofski, Department of Food Science and Human Nutrition.

MAY 2009

Pascasie Adedze, Ph.D. Current Position: Postdoctoral Research Associate, Department of Food Science and Human Nutrition, University of Illinois, Urbana, IL. Advisor: Sharon Donovan, Department of Food Science and Human Nutrition.

Andrea Cachia, M.S. Current Position: Physician Assistant Program, Midwestern University, Glendale, AZ. Advisor: Kenneth Wilund, Department of Kinesiology and Community Health.

Mengyuan Du, Ph.D. Current Position: Seeking employment in the state of Washington. Advisor: William Helferich, Department of Food Science and Human Nutrition.

Trevor Faber, M.S. Current Position: Doctoral Candidate, Department of Animal Sciences, University of Illinois, Urbana, IL. Advisor: George Fahey, Jr., Department of Animal Sciences.

Dana Ghareeb, M.S. Current Position: Nutrition Ambassador in the Organic Department for Al Yasra Food Co. located in Kuwait. Advisor: Charles Hillman, Department of Kinesiology and Community Health.

Dolores (Doane) Guest, Ph.D. Current Position: Postdoctoral Research Associate, Department of Kinesiology and Community Health, University of Illinois, Urbana, IL. Advisor: Lee Beverly, Department of Animal Sciences.

Naiman Khan, M.S. Current Position: Doctoral Candidate, Div. of Nutritional Sciences, University of Illinois, Urbana, IL. Advisor: Ellen Evans, Department of Kinesiology and Community Health.

Ren-Hau Lai, Ph.D. Current Position: Senior Scientist, Davigo Foods International, Inc., Le Sueur, MN. Advisor: Elizabeth Jeffery, Department of Food Science and Human Nutrition.

Brooke Schantz, M.S. Current Position: Pediatric Dietitian, North Shore Pediatric Therapy, Glenview, IL. Advisor: Sharon Donovan, Department of Food Science and Human Nutrition.

Victoria Vieira, Ph.D. Current Position: Postdoctoral Fellow, Obesity and Metabolism Laboratory, Jean Mayer USDA HNRCA at Tufts University, Boston, MA. Advisor: Jeffrey Woods, Department of Kinesiology and Community Health.

Barbara Yudell, Ph.D. Current Position: Seeking employment. Advisor: Manabu Nakamura, Department of Food Science and Human Nutrition.

NUTRITIONAL SCIENCES GRADUATE STUDENT ASSOCIATION OFFICERS



Pictured Left to Right, Back row: Desiree Lavin, Melissa Kaczmarczyk, Krystle Zuniga, Jennifer Barnes, Katherine Kerr, Naiman Khan, and Jonathan Mun.
Front row: Jodee Johnson, Amy Elsen and Hannah Holscher.

Chair:	Hannah Holscher	Web Designer:	Jonathan Mun
Co-Chair:	Jennifer Barnes	Executive Committee Representative:	Katherine Kerr
Treasurer:	Krystle Zuniga	Grievance Committee Representatives:	Amy Elsen and Desiree Lavin
Co-Treasurer:	Jodee Johnson		
Secretary:	Melissa Kaczmarczyk		
Media Representative:	Naiman Khan		

2008-2009 MARGIN OF EXCELLENCE PROGRAM

TRAVEL FUND RECIPIENTS

The objective of the travel funds program is to encourage students to present their research at national and international professional meetings by helping to defray the costs of travel to these meetings. Students are provided with \$300-\$400.

FALL 2008

Nancy Engelmann
Naiman Khan
Ann Liu
Christopher Moulton
Jennifer Woodard

SPRING 2009

Andrew Deutsch
Nikki Ford
Saebyeol Jang
Katherine Kerr
Ren-Hau Lai
Denise Lasker
Jennifer Lee
Heather Mangian
Rose Ann Mathai

SPRING 2009

Mina Mojtahedi
Min Jung Park
Emily Radlowski
Brooke Schantz
Emily Tomayko
Victoria Vieira
Sonja Volker
Krystle Zuniga

RESEARCH FUND RECIPIENTS

Research funds help support research conducted by the students and provides students with the valuable experience of preparing research proposals. The primary selection criterion is the quality of the proposed research and students are provided \$400-\$1,000.

Nancy Engelmann
Nikki Ford
Ryan Grant

Katherine Kerr
Matthew Thorpe
Krystle Zuniga

2008-2009 FELLOWSHIP RECIPIENTS

CONACYT Scholarship

(Mexican Government)

Lillian Diaz Rios
Claudia Luevano Contreras

JBT Fellowship

(College of ACES)

Shelly (Davis) Hester
Katherine Kerr
Ann Liu
Erica Nehrling

National Institute of Health NRSA Fellowship

Jayne Abraham
Desiree Lavin
Jennifer Woodard

USDA National Needs Predoctoral Fellowship

Henna Muzaffar
Matthew Thorpe
Krystle Zuniga

Graduate College Fellowship

Ryan Grant

University Fellowship

Jennifer Barnes
Christopher Moulton



***Gamma Sigma Delta (GSD)** is an agricultural honor society, which seeks to encourage high standards of scholarship and worthy achievements in all branches of the agricultural and related sciences as well as a high degree of excellence in the practice of agricultural pursuits. The College of Agricultural, Consumer and Environmental Sciences and GSD hold the recognition program in the fall of each year.*

Back Row: Dr. Rodney Johnson, Emily Tomayko, Krystle Zuniga, Lillian Diaz Rios, Radhika Ganu, Claudia Luevano Contreras, Kimberly Cephas, Morgan Moon
Front Row: Ryan Grant, Nikki Ford, Desiree Lavin, Matthew Thorpe, Heather Mangian

NSGSA FACULTY AWARD

"For extraordinary contribution, support and encouragement of Nutritional Sciences Graduate Students"

On October 21, 2009 the Nutritional Sciences Graduate Student Association presented **Dr. Michael Miller** with the 2009 Faculty Award. Faculty members are nominated by students based on the degree of involvement in student affairs and the Division.

Dr. Miller stated: I am very honored to receive the NSGSA Faculty Award. I have greatly benefited, both professionally and personally, from my involvement with NSGSA and I look forward to continuing my activities with NSGSA in the future, especially defending Team Miller's title in quiz bowl!



Nancy Engelmann presenting Dr. Miller the NSGSA Faculty Award

STUDENTS RECEIVE CERTIFICATE OF BUSINESS ADMINISTRATION SPONSORED BY ABBOTT NUTRITION

Nancy Engelmann
Dimitri Kashtanov
Melissa Kaczmarczyk

Ann Liu
Mina Mojtahedi
Erica Nehrling
Min Jung Park

Emily Tomayko
Sonja Volker
Jennifer Woodard

STUDENT AWARDS AND ACHIEVEMENTS

Timothy Abbott, M.S. candidate, was awarded a JBT Fellowship.

Kimberly Cephas, M.S. candidate, was awarded a Graduate College and Kraft Fellowship.

Lillian Diaz Rios, Ph.D. candidate, was awarded a CONACYT Scholarship.

Nancy Engelmann, Ph.D. candidate, was elected as the Graduate Student Representative on the ASN Nutritional Sciences Council; received the W. C. Rose Travel Award, DNS; CARIG Poster Competition Award; Nutrition Symposium Poster Competition Award – 1st place for the poster, "[13C]- Carotenoid production from hp-1 tomato cell cultures for human metabolic tracing;" she is the Student Representative for Diet and Cancer Research Interest Section of ASN; her research strides include published first-author publications in *Journal of Agricultural and Food Chemistry*; *Plant Cell Tissue and Organ Culture*.

Nikki Ford, Ph.D. candidate, received the Frank C. Kari Memorial Award; she was the 2007-08 NSGSA treasurer; the ASN-CARIG student representative; and was invited to present at the CARIG RIS section at EB 2009, "Alterations in carotenoid bioaccumulation in mice lacking the CMO-I or CMO-II carotenoid cleavage enzyme."

Radhika Ganu, Ph.D. candidate, was the recipient of the Toshiro Nishida Research Award; Finalist for ASN/Procter & Gamble Abstract Competition; and took First Place in the oral presentation competition at Nutrition Symposium, UIUC, 2009 for "Characterization of porcine betaine homocysteine methyltransferase (BHMT) and BHMT 2 genes."

Ryan Grant, Ph.D. candidate, was awarded a United Negro College Fund: Merck Graduate Dissertation Fellowship 2009. He received the International Ingredient Corporation Pinnacle Award 2009; and an ASN FASEB MARC Travel Award Experimental Biology 2009. He presented a poster at Nutrition Symposium, "Canine adipose tissue transcriptome changes following four weeks of rapid weight gain."

Jodee Johnson, Ph.D. candidate, was awarded a University Fellowship.

Leia Kedem, M.S. candidate, presented a poster at Experimental Biology 2009.

Claudia Luevano Contreras, Ph.D. candidate, was awarded a CONACYT Scholarship.

Heather Mangian, Ph.D. candidate, received The Vars Award and a Promising Young Investigator Award from the American Society for Parenteral and Enteral Nutrition.

Rose Ann Mathai, Ph.D. candidate, is a member of the Provost Graduate Student Advisory Board; was offered a position working at Abbott in the UIUC Research Park office, and

completed her Master's thesis with Dr. Donovan in Summer 2009 and began her doctoral degree with Dr. Juhee Kim in Fall 2009.

Mina Mojtahedi, Ph.D. candidate, received the following: Certificate in Business Administration; David H. Baker Award; Margin of Excellence Travel Award; Abbott Nutrition Scholarship; had the following publications: **Mojtahedi MC**, Valentine RJ, Evans EM, "Body composition assessment methods in physically active individuals with spinal cord injury" *Spinal Cord* 2009, Mar 17 (epub ahead of print); Plawecki KL, Evans EM, **Mojtahedi MC**, McAuley E, Chapman-Novakofski KM. "Food source of calcium intake in black and white postmenopausal women assessed by food frequency and 24-hour recall" *Prev Chronic Disease*, in press; and presented posters: **Mojtahedi MC**, Chapman-Novakofski KM, Rosengren KS, McAuley E, Evans EM. "Protein, carbohydrate and vitamin K related to physical performance in older women" presented at EB 2009, New Orleans, LA. **Mojtahedi MC**, Valentine RJ, Evans EM. "Dietary intake and metabolic markers in athletes with spinal cord injury compared with sedentary non-disabled" presented at ACSM 2009, Seattle, WA.

Henna Muzaffar, Ph.D. candidate, has been awarded a USDA National Needs Fellowship.

Maria Schreckinger, M.S. candidate, attended IFT 2009 and was second author of the poster entitled, "Antioxidant capacity, total polyphenol concentration and in vitro inhibition of lipid accumulation by selected energy drinks in the U.S. market." She also took part in the publication: **Schreckinger ME**, Lotton J, de Mejia E, Lila MA. "Andean berries a comprehensive review on: Chemistry, health implications, processing and commercialization" *Journal of Ethnopharmacology*. (To be submitted)

Gabriel Wilson, Ph.D. candidate, joined more than 80 other professors and graduate students from universities throughout the US and around the world to participate in the National Institutes of Health (NIH) Office of Dietary Supplements (ODS) course, "Dietary Supplement Research Practicum 2009." He also has the following publications: Norton LE, **Wilson GJ**, Indu R, Garlick P, Layman D (2009) "Effects of four different isonitrogenous protein sources differing in leucine content on muscle protein synthesis" *Experimental Biology* (Abstract); Simons J, **Wilson GJ**, "Challenges to cognitive bases for an especial motor skill at the regulation baseball pitching distance" *Res Q Exerc Sport* 2009; 80(3):469-79; Wilson JM, **Wilson GJ**, Zourdas MC, Smith AE, Stout JR, "Invited review beta-alanine supplementation improves aerobic and anaerobic indices of performance" *Journal of Strength and Conditioning* (In Press); Norton LE, **Wilson GJ** (2009) "Optimal protein intake to maximize muscle protein synthesis: Examinations of optimal meal protein intake and frequency for athletes" *AgroFood Industry High-Tech*. 20(2): 54-57. He also received a Graduate Fellowship from the Egg Nutrition Center/ American Egg Board.

Each year the NSGSA organizes a symposium that includes a keynote lecturer and student competition for both poster and oral presentations. The symposium provides a valuable opportunity for students to present their research to peers and faculty prior to presentations at national meetings. Presentations are judged by faculty and the symposium speaker and winners of the poster and oral competitions receive travel awards. This year's keynote speaker was **Dr. Jose M. Ordovas**, who is a Professor of Nutrition and a Senior Scientist at the USDA-Human Nutrition Research Center on Aging at Tufts University in Boston, Massachusetts. He presented "Nutrition meets genetics: Is this the end of 'one size fits all'".



ORAL PRESENTATIONS

"The addition of synbiotics to partial enteral nutrition enhances intestinal adaptation in a short bowel syndrome piglet model" **Andrew S. Deutsch** (Advisor: Kelly A. Tappenden)

"Alterations in carotenoid bioaccumulation in mice lacking the CMO-I or the CMO-II carotenoid cleavage enzyme" **Nikki A. Ford** (Advisor: John W. Erdman, Jr)

"Characterization of porcine betaine homocysteine methyltransferase (BHMT) and betaine homocysteine methyltransferase-2 (BHMT2) genes" **Radhika S. Ganu** (Advisor: Lawrence B. Schook)

"Increased melanocortin activity may contribute to the reduced intake of high protein diets" **Dolores D. Guest** (Advisor: Joseph L. Beverly)

"Long-chain polyunsaturated fatty acids inhibit infectivity of Apicomplexan parasites" **Jennifer H. Lee** (Advisor: Mark S. Kuhlenschmidt)

"Bioaccumulation of carotenoids and sulforaphane conjugates from tomato and broccoli powders with differing bioactive profiles" **Ann G. Liu** (Advisor: John W. Erdman, Jr)

"Lycopene-accumulating E. coli transformed with human CMO II as a lycopene metabolism model" **Peter Lu** (FSHN Graduate Student; Advisor: John W. Erdman, Jr)



Pictured Left to Right: Ann Liu, Heather Mangian, Andrew Deutsch, Gerardo Nava

"Butyrate increases GLUT2 mRNA abundance in Caco2-BBe cells" **Heather Mangian** (Advisor: Kelly A. Tappenden)

"Diet and intestinal sulfate reducing bacteria populations distinguish native Africans from Caucasian and African Americans" **Gerardo M. Nava** (Advisor: H. Rex Gaskins)



"Instrumental variable analysis to adjust for non-compliance to randomized dietary interventions: An application to protein intake and bone health in adults" **Matthew P. Thorpe** (Co-Advisors: Ellen M. Evans and John W. Erdman, Jr)

"Combination of exercise and soy protein improved bone measures and vascular calcification in uremic mice" **Emily J. Tomayko** (Advisor: Kenneth R. Wilund)

"Independent, combined, and duration-dependent effects of diet and exercise on WAT inflammation and metabolic disturbances in obese C57/BL6 mice" **Victoria J. Vieira** (Advisor: Jeff A. Woods)

"Down regulation of GPR43 and T2R38 receptors prevents butyrate-stimulated increases in proglucagon mRNA abundance in NCI-H716 cells" **Jennifer N. Woodard** (Advisor: Kelly A. Tappenden)



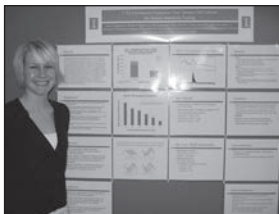
Pictured Left to Right: Jennifer Woodard, Peter Lu, Radhika Ganu, Emily Tomayko, Dolores Guest, Jennifer Lee, Victoria Vieira

POSTER PRESENTATIONS

"Resveratrol-supplemented diets attenuate lipopolysaccharide-induced disruption in working memory and hippocampal IL- β mRNA expression in aged mice" **Jayne Abraham** (Advisor: Rodney W. Johnson)

"A comparison of the bioavailability of sulforaphane from broccoli sprouts and a semi-purified broccoli powder rich in glucoraphanin in healthy human males" **Jennifer M. Cramer** (FSHN Graduate Student; Advisor: Elizabeth H. Jeffery)

" ^{13}C -Carotenoid production from *hp-1* tomato cell cultures for human metabolic tracing" **Nancy Engemann** (Advisor: John W. Erdman, Jr)



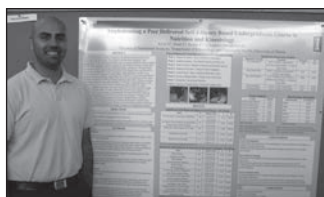
"Developing process: Observation tool assessing infant feeding and nutrition in day care settings" **Jorie Glassner** (Kinesiology and Community Health Graduate Student; Advisor: Juhee Kim)

"Canine adipose tissue transcriptome changes following four weeks of rapid weight gain" **Ryan W. Grant** (Advisor: Kelly S. Swanson)

"Luteolin attenuated pro-inflammatory conditions induced by activated microglia and protected against neuronal cell death" **Sae Byeol Jang** (Advisor: Rodney W. Johnson)

"The effect of a high fat diet on burrowing behavior in mice over a 12 week period" **Melissa M. Kaczmarczyk** (Co-Advisors: Gregory G. Freund and Michael J. Miller)

"Compositional analysis and apparent macronutrient digestibility of four raw meat diets in domestic cats" **Katherine R. Kerr** (Advisor: Kelly S. Swanson)



"Implementing a peer delivered self-efficacy based undergraduate course in nutrition and kinesiology" **Naiman Khan** (Advisor: Karen M. Chapman-Novakofski)

"Dietary carbohydrate level alters body composition and post-prandial glycemic regulation" **Denise A. Lasker** (Advisor: Donald K. Layman)

"Gastrointestinal structural and functional responses of piglets to soy based infant formulas with varying isoflavone content as compared to cow milk based formula" **Rose Ann Mathai** (Advisor: Sharon M. Donovan)

"Protein, carbohydrate and vitamin K related to physical performance in older women" **Mina C. Mojtahedi** (Advisor: Ellen M. Evans)

"An elevated protein diet does not accelerate initiation and early progression of MNU-induced breast cancer tumors in rats" **Christopher J. Moulton** (Advisor: Donald K. Layman)

"Extended anhedonia is induced by acute hypoglycemia in mice" **Min-Jung Park** (Advisor: Gregory G. Freund)

"Mode of delivery and early nutrition differentially impact intestinal development of the neonatal piglet" **Emily C. Radlowski** (Advisor: Sharon M. Donovan)

"Dietary docosahexaenoic acid fully restores fertility and spermiogenesis in the male delta-6-desaturase knockout mouse" **Manuel Roqueta-Rivera** (FSHN Graduate Student; Advisor: Manabu T. Nakamura)

"Isoflavone concentration of soy infant formula influences adipose gene expression in the neonatal piglet" **Brooke B. Schantz** (Advisor: Sharon M. Donovan)



"Prenatal low protein diet influences placental gene expression in rats" **Rita S. Strakovsky** (Advisor: Yuan-Xiang Pan)

"Enrichment of broccoli and tomato with bioactive components: Effects on bioactivity markers in vivo" **Sonja E. Volker** (Advisor: Elizabeth H. Jeffery)

"Lycopene uptake in androgen sensitive tissues of male Copenhagen rats is affected by dietary soy germ" **Krystle E. Zuniga** (Advisor: John W. Erdman, Jr)



Pictured Left to Right: Emily Radlowski, Kenneth Wilund, Margarita Teran-Garcia, Hannah Holscher, Rose Ann Mathai, Jose Ordovas, Jennifer Lee

PHOTO GALLERY FROM NUTRITION RECEPTION AT EB 2009



Krystle Zuniga, Dimitri Kashtanov, Nikki Ford,
Dexter Chen, Nancy Engelmann



Deshanie Rai, Elvira deMejia



Jennifer Lee, Emily Radlowski,
Rose Ann Mathai



Aline Andres, Katherine Kerr



Nathan Matusheski, Anne Kurilich,
Elizabeth Jeffery, Desiree Lavin



Rex Gaskins, David Baker



Ann Liu, Ryan Grant, Peter Lu



Radhika Ganu, Desiree Lavin,
Melissa Kaczmarczyk

THANK YOU!

The faculty and students of the Division would like to recognize **Ed Ulman (Ph.D. 1980)**, the Department of Food Science and Human Nutrition and the Department of Animal Sciences, UIUC for their generous contributions in support of the Nutrition Mixer at EB 2009. Thank you!

PHOTO GALLERY FROM NUTRITION RECEPTION AT EB 2009



Jan Novakofski,
Karen Chapman-
Novakofski,
David Baker



Linda Barenthin,
Greg Paul,
Jami Barenthin-
Houston

Michael
Miller,
Sharon
Donovan,
Brian
Lindshield



Matthew Thorpe,
Dolores Guest,
Emily Tomayko
Christopher
Moulton,
Katherine Kerr



Clinton Allred,
Michael Miller



John Erdman,
Jessica
Campbell,
Nancy
Engelmann,
Krystle Zuniga

John Erdman,
John
Barenthin,
Jami Houston,
Linda
Barenthin



Hyun-Young
Koo,
Yewon Cheon,
Manabu
Nakamura



Marcia Siegel,
Yewon Cheon



Aline Andres,
Mina Mojtahedi

BAKE OFF



Nikki Ford



Peter Lu



WINNERS OF THE 2009 BAKE-OFF

BREAD:

1st: Amy Elsen
2nd: Naiman Khan

COOKIES:

1st: Leia Kedem
2nd: Allyson Bares

BAR/BROWNIES:

1st: Nikki Ford
2nd: Amy Elsen

MUFFINS:

1st: Brendon Smith
2nd: Jennifer Barnes

CUPCAKES/CAKE:

1st: Mina Mojtahedi
2nd: Shelly Davis

FACULTY:

1st & 2nd: Dr. Margarita Teran-Garcia

The NSGSA Bake-Off was held on July 29, 2009.

Students could compete in four dessert categories and attendees could purchase tasty treats.

FALL PICNIC



Nikki Ford, Amy Elsen, and Tony Brown

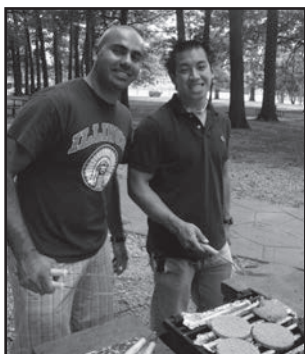
Graduate students, faculty and their families enjoyed a picnic at Illini Grove on September 8, 2009 to welcome new graduate students and to kick off a new academic year.



Sharon Donovan, Tracy Baynard,
Margarita Teran-Garcia



Gabriel Chiu,
Kimberly Cephas



Naiman Khan, Jon Mun



Hannah Holscher,
Jennifer Barnes



Nathan Pratt, Ryan Grant, Ann Liu

QUIZ BOWL - OCTOBER 2009



The Winning Team: Shelly Davis, Emily Tomayko, Dr. Michael Miller, Brendon Smith, Hannah Holscher



Team Loor: Layne Norton, Emily Radlowski, Radhika Ganu, Dr. Juan Loor, Leia Kedem



Team Baynard: Allyson Bares, Katherine Kerr, Dr. Tracy Baynard, Nancy Engelmann, Gabriel Wilson



Team Wilund: Krystle Zuniga, Dr. Kenneth Wilund, Jon Mun, Fang Yang, Melissa Kaczmarczyk



Judge: Dr. Margarita Teran-Garcia, Guest MC: Dr. Dolores Guest, Judge: Dr. Kelly Tappenden

2009 HOLIDAY PARTY



Amy Elsen, Jonathan Mun, Gabriel Chiu, Krystle Zuniga, Nathan Pratt, Allyson Bares



Kimberly Cephas, Shelly (Davis) Hester, Katherine Kerr, Elizabeth Reznikov



Ann Liu, Ryan Grant, Shelly Hester, Allyson Bares, Phillip Hartke, Melissa Kaczmarczyk, Jennifer Barnes



Dr. Jessica Hartke, Sophia Hartke, Dr. Rodney Johnson, Wendy Johnson, Phillip Hartke, Ted Hartke, Dr. Schuyler Korban



Hannah Holscher, Emily Radlowski, Rose Ann Mathai



Naiman Khan, Emily Radlowski, Shelly Hester, Rose Ann Mathai



Christopher Moulton, Emily Tomayko, Jonathan Mun

BEST WISHES TO LINDA

Dr. James Robinson
Linda Barenthin

I would like to thank alumni, faculty and students who have sent me well wishes for my retirement. It has been a pleasure for me to serve the division, college and university for so many years. I have a lot of good memories to take with me.

Fondly,

*Linda Barenthin
2009*



Dr. Rodney Johnson, Linda Barenthin,
Dr. Jessica Hartke



Back row:
Dr. James Robinson,
Dr. John Erdman, Jr.,
Dr. Kelly Swanson,
Dr. Rodney Johnson

Front row:
Hannah Holscher,
Linda Barenthin,
Dr. Sharon Donovan



Linda Barenthin, Dr. John Erdman, Jr.,
Dr. Sharon Donovan, Dr. Rodney Johnson

REMEMBERING TWO LONG TIME DIVISION PROFESSORS

DR. RALPH NELSON

Dr. Ralph Nelson, 81, passed away in February 2009 at his home in Ames, IA. He earned his M.D. and Ph.D. in 1953 and 1961, respectfully at the University of Minnesota.



Dr. Nelson joined the UI as a Professor of Clinical Medicine in 1979. He later became the Head of the Department of Internal Medicine at the UI College of Medicine, retiring in 1997.



Professor Nelson's primary research interest was in nutrition and metabolic processes. His vision and hope was to find a cure for osteoporosis, and his research has led to potential treatments for humans dealing with kidney disease, eating disorders and mental illness, as well as osteoporosis. He has been a leading scholar in studying the effects of metabolism of bears before, during and after winter sleep, and this research has led to numerous publications and several academic awards. He continued his research until 2004.

We will fondly remember him for his wonderful sense of humor as well as his dedication to his research and his bears.

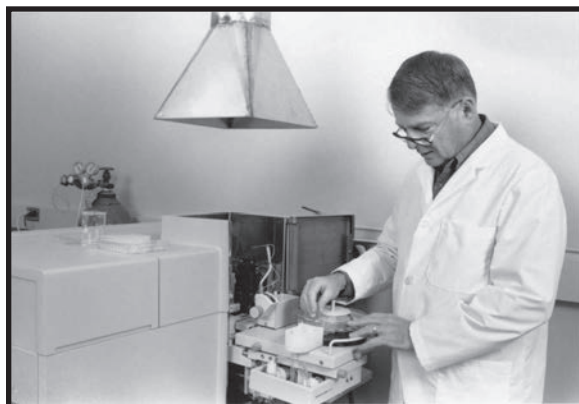
DR. DAVID BAKER



Dr. David Baker, 70, passed away in December 2009 at his home in Urbana, IL, after a lengthy battle with pancreatic cancer. He earned his B.S., M.S., and Ph.D. degrees at the University of Illinois at Urbana in 1961, 1963 and 1965 respectfully.

Dr. Baker spent two years at Eli Lilly in Indianapolis before returning to the University of Illinois in 1967 as an assistant professor of nutrition in the Department of Animal Sciences. He quickly rose through the ranks to become Professor of Nutrition in 1974.

Dr. Baker also held joint appointments as Professor of Comparative Nutrition in the University of Illinois Division of Nutritional Sciences and College of Medicine. In 2005, he received the ultimate honor by being elected to the National Academy of Sciences. His work on amino acid nutrition and metabolism in a multitude of species, including chicks, pigs, rats, mice, cats, dogs and humans left an indelible mark. Dr. Baker was a strong advocate for the Division. Although he will be dearly missed, his memory will live on thanks, in part, to the endowed David H. Baker Nutrition Award presented annually to a DNS student in recognition of excellence in research.



WELCOME NEW DIVISION STAFF MEMBERS



Jessica L. Hartke, Ph.D.
Program Coordinator
Email: jessh@illinois.edu

Dr. Hartke joined the Division in October, 2009, in the newly-created position of Program Coordinator. A DNS alumnus, she completed her Ph.D. in 2006 under the advisement of Sharon Donovan. Her research focused on the intestinal development and gene expression of piglets suckling sows transgenic for human IGF-I. Prior to joining the DNS, she was employed as a Research Scientist in the UIUC Departments of Animal Science and Food Science and Human Nutrition, and was Managing Editor of the *Journal of Nutrition Education and Behavior*. Jessica currently resides on a farm in rural Fithian, IL, with her husband, Ted (a civil engineer), and children: Phillip (5 yrs old) and Sophia (2 yrs old).

Arena R. Jackson
Office Support Specialist
Email: jacksona@illinois.edu



Arena Jackson was hired in December, 2009, as the new Division Office Support Specialist. She was most recently with the UIUC C-FAR office, and has been working in the College of ACES for a number of years. Arena lives in the Champaign area with her 2 children: Chantel (14 yrs old) and Waymond Jackson III (9 yrs old).

NEW FACULTY MEMBERS



TRACY BAYNARD, Ph.D.
Assistant Professor
Department of Kinesiology and Community Health
College of Applied Health Sciences

RESEARCH INTERESTS: *Obesity and related comorbidities, exercise and cardiovascular physiology, adipose tissue, postprandial period, inflammation.*

Dr. Baynard's research interests involve the interaction between exercise, obesity and cardiovascular function. Specifically, her lab is currently investigating the effects exercise training has on ameliorating inflammation stemming from adipose tissue. They are evaluating the effects exercise has not only on adipose tissue, but how these responses compare to other types of tissue (e.g. vasculature) within a mouse model of diet induced obesity. In addition to animal work, she is also very interested in applied/clinical work with obese persons, with or without type 2 diabetes and/or the Metabolic syndrome. This is important as the greatest risk for cardiovascular disease and events is associated with uncontrolled glucose levels during this postprandial period. In summary, the lab's efforts aim to bridge the understanding of how exercise impacts several key elements of obesity-induced dysregulation.

CRAIG GUNDERSEN, Ph.D.
Associate Professor
Department of Agricultural and Consumer Economics
College of Agricultural, Consumer and Environmental Sciences (ACES)

RESEARCH INTERESTS: *Evaluation of food assistance programs; the determinants of food insecurity and food assistance participation; food assistance and food insecurity measurement issues; stress, food insecurity and childhood obesity.*

Dr. Gundersen's research is in four main areas. First, he examines the efficacy of food assistance programs with a recent concentration on the impact of food stamps on child health outcomes. Second, his work on the determinants of food insecurity and food assistance participation has recently focused on the determinants of food insecurity among American Indians and among older Americans and the determinants of food stamp participation among seniors. Third, he examines measurement issues pertaining to food insecurity and food assistance participation. For the former, he has recently designed new measures of food insecurity and for the former, he has analyzed how misreporting of food stamp participation status can affect inferences about the impact of food stamps on health outcomes. Fourth, he examines the effects of food insecurity and stress on childhood obesity.



NEW FACULTY MEMBERS



YONG-SU JIN, PH.D.

Assistant Professor in Microbial Genomics
Department of Food Science and Human Nutrition
Institute for Genomic Biology
College of ACES

RESEARCH INTERESTS: *Probing, characterizing, and engineering cellular state through systems and synthetic biology; Metabolic engineering for production of value added products (fuels, chemicals, and nutraceuticals).*

Metabolic engineering, which draws upon the key engineering principles of integration and quantification, is a platform technology that provides solutions to various biological problems in the context of systems and synthetic biology. In particular, Dr. Jin is interested in developing and applying systematic and combinatorial methods for strain improvement for the production of fuels, chemicals, and nutraceuticals. Also, he would like to extend these methods for studying fundamental biology problems, such as aging and stress response. The overall goals of the research are (1) to develop useful/efficient computational and experimental tools for the dissection of complex metabolic networks in microbial cells, and (2) to create optimal strains for biotechnological processes using these developed tools.

MARGARITA TERAN-GARCIA, M.D., PH.D.

Assistant Professor
Department of Food Science and Human Nutrition
College of ACES

RESEARCH INTERESTS: *Human nutrition; gene-nutrient interactions of humans; the role of genetic and environmental influences on the development of obesity.*

The goal of Dr. Teran-Garcia's research is to expand on the knowledge of gene-environment interactions. Her individual genetic profile interacts with the environment to allow a gene or groups of genes in different metabolic pathways to adapt to changes in diet or exercise and many other environmental factors, to maintain a healthy status. As we understand more about gene-environment interactions, individualized recommendations for preventing obesity and obesity-related diseases will become more accessible and reliable. Her research group investigates nutrient-gene, exercise-gene and other gene-environment interactions in children and adults from diverse populations. Their goal is to find early diagnosis markers that will help in the development of effective and individualized interventions directed at preventing childhood and adult obesity, and the morbidity due to obesity-related diseases.



DAVID A. WILLIAMS, VMB, PH.D., DACVIM, DECVIM-CA

Professor and Department Head
Veterinary Clinical Medicine
College of Veterinary Medicine

RESEARCH INTERESTS: *Development and application of new tests for gastrointestinal diseases, particularly those affecting the pancreas, small intestine, stomach and liver of dogs and cats.*



David Williams founded the "GI Lab" in 1985 at the University of Florida, when he introduced assay of serum trypsin-like immunoreactivity (TLI) in the dog to the United States. His priorities at the University of Illinois are to establish excellent clinical teaching and research programs in the Department of Veterinary Clinical Medicine at a time when many new faculty members have recently joined the department.

FACULTY PROFESSIONAL SERVICE

David H. Baker served on the Board of Directors International Council of Amino Acid Science (ICAAS) since 2004 and was a member of the Strategic Planning Committee of ASN. David was Co-Chair of 2010 ASN Symposium "Frontiers of Amino Acid Research: Emerging Clinical Applications."

Tracy Baynard recently joined the Division of Nutritional Sciences and the Obesity Society.

Robert D. Dantzer is currently the Director of the Integrative Immunology and Behavior Program, Editor-in-Chief of Psychoneuroendocrinology, Elsevier, and Associate Editor of Brain, Behavior, and Immunity, Elsevier. He is also Editor of the Section on Production and Action of Cytokines in the Brain for the 4th Edition of Psychoneuroimmunology, Elsevier and is on the Editorial Board of Stress, Neuroimmunomodulation, European Journal of Pharmacology, Physiology and Behavior. Robert is the Section Editor for Psychoneuroendocrinology and Psychoneuroimmunology, Encyclopedia of Behavioral Neuroscience (Koob GF, LeMoal M, Thompson R, Eds, Elsevier). He is a member of NIH, Neuroendocrinology, Neuroimmunology, and Behavior Study Section, Center for Scientific Review, July 1, 2009-June 30, 2013. In October 2008, he served on PhD defense committee for Caroline Andre, Neuroscience Program, University Paul Sabatier, Toulouse, France and NIH Center for Scientific Review, Participation in the Neuroendocrinology, Neuroimmunology, and Behavior Study Section, San Francisco, CA. In November 2008, Robert was part of NIH, Center for Scientific Review, Participation in the Special Emphasis Panel to review applications in response to RFA-09-040, Novel NeuroAIDS Therapies, Integrated Preclinical/Clinical Program in DC. He is part of the Dissertation Committee for Desiree Lavin and Jayne Abraham.

Sharon M. Donovan assumed the office of Vice President-elect of the American Society for Nutrition (ASN) on June 1, 2009. She will serve as Vice President in 2010, President in 2011 and Past-President in 2012. She also serves on the Strategic Oversight Committee, Chair - Lactation RIS, Strategic Taskforce on Structure and Council Interactions, Nutritional Sciences Council, 2008-2010 and Nominating Committee for 2010 Young Investigator Awards. Sharon is on the Executive Committee, 2007-2010, for the International Society for Research on Human Milk and Lactation. She served on the NIDDK-C Review Committee, T32 Training Grants, Oct. 2008 and NIDDK Review Committee, Special Emphasis Panel, Digestive Diseases and Nutrition Fellowships ZK1 GRB-2 (M1) 2008-2011.

John W. Erdman, Jr. continues to chair the Committee on Military Nutrition Research, Food and Nutrition Board, National Academy of Science and is a member of the Board of Trustees, ILSI-NA. He is Chair of the ASN Nomination Committee, and a member of the ASN Strategic Oversight Committee. John is also a member of the ASN/IFT/IFIC Food Science-Nutrition Task Force.

George C. Fahey, Jr. takes part in these organizations: Associate Editor, *Journal of Animal Physiology and Animal Nutrition*; Editorial Board Member: *Journal of Nutrition*, *British Journal of Nutrition*, *Archives of Animal Nutrition*, *Beneficial Microbes*, *Journal of Animal Science*; Scientific Advisory Board Member; GRC Corporation; Dietary Fiber Advisory Board Member for General Mills, Minneapolis, MN; Research Associate, Memphis Zoo, Memphis TN.

Diana Grigsby-Toussaint is a member of the Advisory Board and ESRI-GIS Development Center at UIUC. She also hosted an Undergraduate Geographic Information Systems (GIS) & Health Workshop at UCSB. (see photo)



Schuyler D. Korban is appointed to the following editorial boards: Editor-in-Chief of Plant Molecular Biology Reporter, 2008-present; Editor-in-Chief of PCTOC: *Journal of Plant Biotechnology*, 2008-present; Associate Editor of the *Plant Genome*, 2008-present; Associate Editor of *Plant Breeding*, 2008-present; Associate Editor of *Tropical Plant Biology*, 2008-present and on the Editorial Board for *Critical Reviews in Plant Sciences*, 2008-present. He has the following professional service: Served on an NSF-Office of International Science & Engineering-EAPSI Orientation program for U.S. graduate students traveling to New Zealand for short term research internships, Washington, D.C.; Served on an NIH Review Panel - National Center for Research Resources Special Emphasis - IDeA Networks of Biomedical Research Excellence (INBRE), 2008; Served on the American Association for the Advancement of Science (AAAS) Research Competitiveness Program Grant Review Panel - King Abdul-Aziz City for Science and Technology (KACST) - Saudi Arabia, 2008 & 2009; and served on the Scientific Committee for the 'First International Symposium on Biotechnology of Fruit Trees,' Dresden, Germany, Sept. 2008.

Mary Ann Lila is currently Vice President of the Global Institute for BioExploration (GIBEX) and Vice-Chairman of the International BioExploration Society (IBEX). She also is involved with the Society for In Vitro Biology, Constitution and ByLaws Committee as well as the International Workshop on Anthocyanins Science Advisory Board. Mary Ann is also on the Board of Directors for CAST (Council for Agricultural Science and Technology) 2009-2011 and serves as Vice-Chair of the CAST Membership and Marketing Committee.

Michael J. Miller moderated a session entitled: "The Science and Economics behind Sustainable Dairy Processing" at the 2009 IFT meeting.

FACULTY PROFESSIONAL SERVICE, CONTINUED

Margarita de L. Teran Garcia is currently a member of: The Obesity Society, ADA, ASHG, Editorial Board for *Nutrients* and a member of International Research Group for UP Amigos (University of San Luis Potosi InterAction: Multidisciplinary Investigation on Genetics, Obesity and Social-Environment).

Kelly S. Swanson is a part of these organizations: Chair, Experimental Animal Nutrition RIS of ASN; Vice-Chair, Companion Animal Steering Committee of the American Society of Animal Science; Faculty Advisor, American Pre-Vet Medical Association; UIUC Nanotechnology Steering Committee; UIUC College of ACES Research Academy Steering Committee; UIUC DNS Executive Committee;

Kelly S. Swanson (cont.) and Faculty Advisor, UIUC Department of Animal Sciences Pre-Vet Club.

Kelly A. Tappenden is a member of the AGA Institute Governing Council - American Gastroenterological Association, 2009-2011; President, Board of Directors - American Society for Parenteral and Enteral Nutrition, 2008-09; and the Canadian Institutes of Health Research, Nutrition Peer Review Section, 2009.

FACULTY AWARDS, PROFESSIONAL AND PERSONAL ACHIEVEMENTS

Tracy Baynard became an Aunt to twin nieces this April.

Susan M. Brewer received a NACTA 2009 Teacher Fellow Award.

Karen M. Chapman-Novakofski received the Abbott Nutrition Award in Women's Health, American Dietetic Association for Nutrition Education and a 2009 NACTA Teacher Fellow Award.

Robert D. Dantzer had 15 peer-reviewed scientific articles (Total of 372), 6 chapters in books (Total of 108), 8 abstracts presented at scientific meetings and cited in the h-index 64 times. The index is based on the set of the scientist's most cited papers and the number of citations in other people's publications.

Sharon M. Donovan was reappointed the Melissa M. Noel Endowed Chair in Nutrition and Health for 2008-2013.

Nicki J. Engeseth received a NACTA 2008 Teaching Fellow Award.

John W. Erdman, Jr. received the College of ACES Spitz Land-Grant Professorial Career Excellence Award and was a Highly Cited Researcher for the Institute for Scientific Information (ISI). He will co-edit the 10th edition of the Present Knowledge of Nutrition which will be published in 2011.

George C. Fahey, Jr. received the Flagship Fellowship from CSIRO, Adelaide, Australia and Highly Cited Researcher, Institute for Scientific Information (ISI).

Diana Grigsby-Toussaint had the following publication: Zenk SN, **Grigsby-Toussaint DS**, Curry SJ, Berbaum M, Schneider L (In Press). Short-term temporal stability in observed retail food characteristics. *Journal of Nutrition, Education and Behavior*.

Craig G. Gundersen had the following publications: Lavelle B, Larsen M, and **Gundersen C**. "Research synthesis: Research strategies for surveys of American Indians" *Public Opinion Quarterly* v73, 385-403, 2009; **Gundersen C**, Garasky S and Lohman B. "Food insecurity is not associated with childhood obesity as assessed using multiple measures of obesity" *Journal of Nutrition* v139, 1173-1178, 2009; **Gundersen C** and Kreider B. "Food stamps and food insecurity: What can be learned in the presence of nonclassical measurement error?" *Journal of Human Resources* v43 (2), 352-382, 2008; **Gundersen C**, Lohman B, Garasky S, Stewart S, and Eisenmann J. "Food security, maternal stressors, and overweight among low-income U.S. children: Results from NHANES 1999-2002" *Pediatrics* v122, e529-e540, 2008; **Gundersen C** and Kelly T. "School attendance and educational enrollment for maternal orphans in Zimbabwe: An instrumental variable approach" *Journal of African Development* v10(1), 33-50, 2008; **Gundersen C**, Lohman B, Eisenmann J, Garasky S, and Stewart S. "Lack of association between child-specific food insecurity and overweight in a sample of 10-15 year old low-income youth" *Journal of Nutrition* v138, 371-378, 2008; and **Gundersen C**. "Measuring the extent, depth, and severity of food insecurity: An application to American Indians in the United States" *Journal of Population Economics* v21(1), 191-215, 2008.

Kristen Harrison and husband Greg are thrilled to announce that their twins, Ivan and Petra Kacvinsky, were born on July 14, 2009.

William G. Helferich received the College of ACES Senior Faculty Award for Excellence in Research and the IFT 2009 Bernard L. Oser Food Ingredient Safety Award.

FACULTY AWARDS, PROFESSIONAL AND PERSONAL ACHIEVEMENTS, CONTINUED

Schuyler S. Korban received the 2008 Outstanding Graduate Educator Award from the American Society for Horticultural Science; 2008 NACTA Teacher Fellow Award from the North American Colleges & Teachers of Agriculture; the American Association for the Advancement of Science Fellow 2008; the Crop Science Society of America Fellow 2008; the University of Illinois Campus Award for Excellence in Mentoring Graduate Students 2008; and the Fullbright Distinguished Chair Award for 2007-2008.

Juan J. Loor was an invited speaker at the 11th International Symposium on Ruminant Physiology (ISPR), September 2009.

Paul E. McNamara received the 2009 Champaign-Urbana International Humanitarian Award and the 2008 Champaign-Urbana International Humanitarian Award for Research and Education.

Michael J. Miller's first graduate student, Alyssa Francl, received her MS degree in Aug 2008 and is now employed as a scientist with Danisco.

Manabu T. Nakamura received the E.L.R. Stokstad Award from the American Society of Nutrition.

Kelly A. Tappenden was promoted to Professor; was named a 2008-2011 University Scholar; is President of the American Society of Parenteral and Enteral Nutrition and received the 2008 American Dietetic Association, Excellence in Dietetic Research Award.

Margarita de L. Teran-Garcia was part of the Consolidation of the International Cooperative Agreement between the University of Illinois and the Universidad Autonoma de San Luis Potosi.

TEACHERS RANKED AS EXCELLENT

FALL 2008

Paul Cooke	VBS 615	General Physiology I
Elvira deMejia	FSHN 416	Food Chemistry Laboratory
Ellen Evans	KCH 452	Clinical and Applied Exercise Physiology
Paul Gold	PSYC 496	Advanced Current Topics in Psychology
Kristen Harrison	COMM 428	Media and the Human Body
Hannah Holscher (TA)	FSHN 420	Nutritional Aspects of Disease
Kimberly Huey	KCH 399	Special Topics
Ghazal Naseri (TA)	FSHN 429	Nutrition Assessment and Therapy
Michael Plewa	CPSC 432	Genetic Toxicology
Karen Plawecki (TA)	FSHN 199	Undergraduate Open Seminar
Rita Strakovsky (TA)	FSHN 426	Biochemical Nutrition I
Kelly Tappenden	FSHN 420	Nutritional Aspects of Disease
Bryan White	ANSC 350	Cellular Metabolism in Animals
Kenneth Wilund	KCH 553	Circulorespiratory Physiology

SPRING 2009

Hong Chen	FSHN 427	Biochemical Nutrition II
Nancy Engelmann (TA)	FSHN 220	Principles of Nutrition, 510 Topics in Nutrition Research
Ellen Evans	KCH 386	Exercise Instruction & Elderly
Timothy Garrow	FSHN 511	Regulation of Metabolism
Hannah Holscher (TA)	FSHN 220	Principles of Nutrition
Desiree Lavin (TA)	FSHN 220	Principles of Nutrition
Paul McNamara	ACE 499	Agricultural and Consumer Economics in Service
Michael Miller	FSHN 573	Advanced Food Microbiology
Michael Murphy	ANSC 448	Math Modeling in Life Sciences, 590 Disciplinary Seminar
Ghazal Naseri (TA)	FSHN 220	Principles of Nutrition, 428 Community Nutrition
Rita Strakovsky (TA)	FSHN 427	Biochemical Nutrition II
Kelly Swanson	ANSC 422	Companion Animal Nutrition
Jeff Woods	KCH 450	Biochemistry of Exercise, 557 Stress Immunology

FACULTY NEW RESEARCH FUNDING AND RESEARCH STRIDES

Tracy Baynard had the following internal grants awarded: Mary Jane Neer Grant (AHS) - Baynard - PI (Co-I: P Gold, B Fernhall) April 2009, "Can administration of activity-dependent neuroprotective protein ameliorate common decrements in brain and autonomic function in a mouse model of Down Syndrome?" and UIUC Research Board - Baynard - PI (Co-I: J Woods) May 2009, "Temporal development and the effects of exercise training on adipose tissue hypoxia and inflammation in mice fed a high-fat diet."

Robert D. Dantzer has the following pending research: NIH/NIMH RC1 Neuroimmune mechanisms of depression, PI; NIH/NIMH R01 for Biobehavioral role of brain kynurenine metabolism in mental illness, PI J O'Connor, co-PI; DOD CD-MRP, Gulf War Illness Research Program, Interventions that target neuroinflammation in Gulf War illness, PI K Kelley, co-PI; UIUC, Division of Biomedical Sciences, Translational Research Thrust, Neuroimmune mechanisms of inflammation-associated behavioral and mood disorders, TRT Leader and NIH/NCCAM, Center for Botanicals and Brain Health, Maintaining a healthy brain throughout life, PD E Jeffery, Project Leader, Diet, Neuroinflammation and Depression.

Alan D. Diamond, along with Drs. Benya and Carroll at UIC, received an NIH grant entitled, "Colon cancer prevention with selenium."

Sharon M. Donovan received, along with GC Fahey, MS Kuhlenschmidt and MJ Miller, an NIH grant (R01 HD-061929) entitled, Mechanisms by which human milk oligosaccharides protect against rotavirus, 2009-2013. She also received new grants from Abbott Nutrition, Arla Foods, Mead Johnson Nutrition and Wyeth Nutrition.

George C. Fahey, Jr. received new grants from General Mills, GTC Corporation, Temple-Inland Corp., and P&G Petcare.

Diana Grigsby-Toussaint is working on the Center for Spatially Integrated Social Science/National Science Foundation, "Integrating Spatial Thinking in the Undergraduate Curriculum: SPACE Undergraduate GIS and Health Workshop."

Craig G. Gundersen received the following grants: U.S. Department of Agriculture, Cooperative State Research, Education, and Extension Service, National Research Initiative, "Stress, financial management, and childhood obesity" 2009 PI; Meals on Wheels Association of America Foundation, Inc., "Update on senior hunger" 2009 PIs - C Gundersen and J Ziliak; U.S. Department of Agriculture, Economic Research Service, "A theoretical and empirical examination of financial stress and obesity among those over age 50" 2008 PI - U Neelakantan.

Yong-Su Jin was selected to receive a fellowship from the National Center for Supercomputing Applications (NCSA) for 2009-2010. The fellowship will enable Dr. Jin to pursue a research project titled, "Optimal strain design for the production of ethanol from renewable biomass through computing elementary flux modes using a genome-scale stoichiometric model" in collaboration with NCSA.

Schuyler S. Korban received a grant from the United Soybean Board, "Developing rust resistant soybeans: Identifying genes for rust resistance" Korban (PI), Hartman, and Ghabrial, 2008-2010.

Mary Ann Lila, Lorraine A and Brown A are researching the development of novel and directed tools and processes for bioinformatics-intensive probe of the blueberry genome as part of the Blueberry Bioinformatics Genome Sequencing.

Kelly S. Swanson has new funding sources from Cereal Partners Worldwide and MI Industries.

FACULTY INVITED TALKS 2008-2009

David H. Baker spoke at the 2009 W.J. Visek Symposium in March and also at the David H. Baker Amino Acid Symposium held in Des Moines, IA.

Tracy Baynard presented a European College Sports Sciences Satellite Course, Inflammation and Cardiovascular Disease, July 2008 Lisbon, Portugal; was an invited instructor July 2008 & 09 for European Master's Course in Physiotherapy: Exercise Testing and Evaluation, taught in Lisbon, Portugal at Lisbon Technical University Faculty of Human Movement; and was invited to be a part of a Featured Science Session May 2009 for the American College of Sports Medicine Annual Meeting in Seattle, WA.

Robert D. Dantzer presented the following: "Neuroimmune mechanisms of sickness" Workshop on Biomarkers of Stress and Adaptation, Department of Psychology, University of Trier, Germany (7/2008); "Psychoneuroimmunologic mechanisms of fatigue" Conference on Bedside-to-Bench: Idiopathic Fatigue of Aging, co-sponsored by the American Geriatrics Society and the NIA, Bethesda, MD (9/2008). He also presented "Targeting inflammation for treating mood disorders" Astra Zeneca, Wilmington, DE (9/2008); "Cytokines and depression" Center for Biochemical and Biophysical Studies, Northern Illinois University, DeKalb, IL (11/2008). In December 2008, he presented "Inflammation-associated depression: Is there room for a role of serotonin?" British Pharmacological Society Winter Meeting, Symposium on Cytokines, Depression and 5-HT, Brighton, UK. He attended the World Congress of Biological Psychiatry in Paris, France and presented "From inflammation to depression: A role for indoleamine 2, 3-Dioxygenase?" and "Identifying biomarkers of depression: New insight from animal models" (6/2009); and gave an invited lecture, "Is Kynurenine metabolism a viable target for treating inflammation-associated depression" at Bristol Myers Squibb, Wallingford, CT (7/2009).

Sharon M. Donovan organized and chaired Symposia, Immunomodulatory Components in Human Milk, EB 2009. She also presented the following: "Inhibitory actions of human and porcine milk oligosaccharides against sialic acid-dependent and independent rotavirus" 14th Int'l Conference of the Society for Research on Human Milk and Lactation (ISRHML) in Perth Australia (1/2008); "Interdisciplinary nutrition research and graduate education at the University of Illinois" University of Copenhagen, Denmark (2/2008); "Enterally administered bovine colostrum extract modulates intestinal barrier function and immune gene expression in parenterally-fed neonatal piglets" University of Copenhagen, Denmark (2/2008); "Actions of soy formula and soy isoflavones in the developing intestine" VII Biennial Nestle Nutrition Conference, Mexico City, (10/2008); and "Functional genomics of the developing intestine: Impact of nutrition" Arkansas Children's Nutrition Center, Little Rock, AR (11/2008).

John W. Erdman, Jr. presented talks at the 14th World Congress of Food Science and Technology in Shanghai, China and at the International Symposium of the Korean Society of Applied Biological Chemistry in Daegu, Korea.

George C. Fahey, Jr. presented at the following: Morris Lecture, UC-Davis; Halver Lecture, Washington State University, Pullman; USDA, Peoria, IL; Wageningen University, the Netherlands; American Society of Animal Science meetings, Montreal, Quebec, Canada; Kraft Foods, Glenview, IL; GTC Corporation, Golden, CO; American Society of Microbiology meeting, Philadelphia, PA; American Dairy Science Association Discover Conference 16, Nashville, IN; General Mills, Minneapolis, MN; and Cargill, Omaha, NE.

Diana Grigsby-Toussaint presented the following: "Is there an association between neighborhood characteristics and diabetes rates?" NIDDK Network of Minority Research Investigators Midwest Regional Workshop, Chicago, IL (11/2008); Kubo J, Mutyala B, Grigsby-Toussaint D, "Income diversity and prevalence of low birth weight in Chicago neighborhoods, 1990-2004" Maternal Child Health Epidemiology Conference, Atlanta, GA (12/2008); Grigsby-Toussaint D, Moise I, Murphy S, "Spatial dynamics of the retail food store environment in Central Illinois - Implications for overweight and obesity in families" URISA GIS in Public Health Conference, Providence, RI (6/2009) and Grigsby-Toussaint D, Lipton RB, Chavez N, Johnson TP, Handler AH, Kubo J, "Neighborhood socioeconomic characteristics and diabetes risk in Chicago youth" 42nd Annual Meeting of the Society for Epidemiologic Research (6/2009).

Craig G. Gundersen had the following presentations and invited talks: "The causes, consequences, and future of senior hunger in America" presentation for Board of the Meals on Wheels Association of America Foundation and U.S. Senate Special Committee on Aging; "The causes and consequences of food insecurity among seniors in the United States" Division of Nutritional Sciences Seminar, University of Illinois; "Food security, maternal stressors, and overweight among low-income U.S. children: Results from NHANES 1999-2002" National Association of Welfare Research and Statistics Annual Meetings; "Identifying the effects of food stamps on child health outcomes" Department of Economics Seminar, University of California, Riverside; Association of Public Policy Analysis and Management Annual Meetings, Department of Economics Seminar, Claremont McKenna College and Department of Agricultural and Consumer Economics Seminar, University of Illinois; "The relationship between food insecurity and childhood obesity under several parametric and non-parametric representations" American Agricultural and Economic Association Annual Meetings; "Stress and childhood obesity" Obesity Research Center Seminar, University of Tennessee, Institute of Government and Public Affairs Seminar, (continued)

Craig G. Gundersen (cont.) University of Illinois, Department of Human and Community Development Seminar, University of Illinois, and NCCC052 Annual Workshop.

Schuyler S. Korban was invited to visit and present at China Agricultural University, Chinese Academy of Sciences in Beijing and Wuhan, Huazhong Agricultural University, Zhejiang University, Center for Shanghai Bioinformatics Technology, Shanghai Jiao Tong University, and Shandong Agricultural University through May 22-June 6, 2009. Schuyler also presented the following: a Keynote speech on "Educational Opportunities in New Zealand" NSF - Office of International Science & Engineering/American College of Engineering Education - EAPSI Orientation, Washington, D.C. (4/2009); "Isolation and functional analysis of genes encoding flavonoid 3'-hydroxylase in apple" First International Symposium on Biotechnology of Fruit Species, Dresden, Germany (9/2008); "Apple systems biology" ASHS Colloquium on Systems Biology, annual Meetings of the American Society for Horticultural Science, Orlando, FL (7/2008); "Comparative genomic analysis of an apple EST collection" Institute for Renewable Resources, The Institute for Advanced Learning and Research, Danville, VA (3/2008); "Structural and functional analysis of the Vf locus for resistance to apple scab" Department of Horticulture, Virginia Tech, Blacksburg, VA (3/2008); and "A genome-wide physical map for the apple" XVI Plant & Animal Genome Conference, San Diego, CA (1/2008).

Mary Ann Lila presented "WBANA 2008 wild blueberries: Satiety and hypoglycemic effects" Bar Harbor, ME; "Tribal traditions resources and health, Under the cloud of climate change" (with Dr. Courtney Flint) UI NRES Seminar (10/2008); "Phytochemicals and human health benefits: Beyond chronic disease prevention" 7th International Phytochemical Conference in Buena Park, CA (10/2008); "Getting one foot in the door - access for science," NCSU Horticulture Department Seminar in Raleigh, NC (10/2008); and "GIBEX approach to bioexploration in partnership with the RGOB" Royal Government of Bhutan, Thimphu, Bhutan (12/2008). She also presented, "Metabolomics of adaptogens: In vitro and in vivo approaches" New Zealand Branch of the International Association of Plant Biotechnology Keynote Address, Napier, NZ (2/2009); "Highlighting and validating health-protective foods and products: How science sways the marketplace" Plant and Food Research, Ltd Seminar, Mt. Albert, NZ (2/2009); "Dietary synergy of superfruit phytochemicals" Nutracon Superfruit Symposium, Anaheim, CA (2/2009); "The plants for human health institute" ACC, Kannapolis, NC; "Collaboration opportunities" BASF, Durham, NC (3/2009); "Health benefits and chemical composition of maqui berry" Phytomedics Chile, New Brunswick, NJ (4/2009); "The North Carolina Research

Mary Ann Lila (cont.) Campus: A transdisciplinary approach to the science of health and wellness. Update on Biotechnology in the South East" Society for In Vitro Biology, Charleston, SC (6/2009); and "Tribal berries and health under the cloud of climate change" International Berry Health Benefits Symposium, Monterey, CA (6/2009).

Michael J. Miller presented "Characterization of lactobacillus diversity" Purdue University (4/2009) and "Diversity of probiotic lactobacilli" Universidad Autonoma de Queretaro, Queretaro, Mexico (12/2009).

Kelly S. Swanson was part of the following invited talks: "Canine and feline obesity" American Pre-Vet Medical Association National Symposium, Urbana, IL (3/2009); "Novel proteins and diet formats for dogs and cats" 2009 American College of Veterinary Internal Medicine Forum, Montreal, Canada (6/2009); "Maternal nutrition: Effects on long-term health of the offspring" 2009 American College of Veterinary Internal Medicine Forum, Montreal, Canada (6/2009); "Potential opportunities for optimizing nutrition of tomorrow's pet" Conference on Pet Nutrition in the 21st Century: From Complete and Balanced to Optimised Nutrition, Waltham on the Wolds, UK (7/2009); "Canine model of nutrition and aging" NIH Alternative Animal Models for Aging Research Workshop, Bethesda, MD (7/2009).

Kelly A. Tappenden gave the following presentations: "Gut modulation: Effect of EN on gut structure and function" Nestle Nutrition Symposium, Igassu Falls, Brazil, (8/2008); "Nutrition, inflammation, and intestinal function" Children's Mercy Hospital and Clinics, Kansas City, MO (9/2008); "Dietary fiber and prebiotics in infant formulas" VII Nestle Nutrition Conference, Mexico City (10/2008); "Emerging therapies for intestinal - strategies from the distal bug" Ohio Society of Parenteral and Enteral Nutrition, Youngstown, OH (10/2008); "Feeding the microbiome: From paper to patient" Food and Nutrition Conference and Exposition, Chicago, IL (10/2008); "Bowel function in hypotension and hypoxia" Harvard Medical School, Cambridge, MA (11/2008); and the Presidential Address "Quest for excellence: Inspiration for the ileum" Clinical Nutrition Week, New Orleans, LA (2/2009).

Margarita de L. Teran Garcia presented at the First International Symposium, "Nutrition, Health and Individualized Genetics", a three-day conference regarding adolescent health and promoting international collaboration with the Universidad Autónoma de San Luis Potosí (Mexico).

WHAT'S NEW WITH YOU?

We'd like to know what's going on with our alumni. Please update us with new employment information and exciting happenings through our website alumni page. We can include photos of alumni social gatherings, conferences, lab groups and family additions in our next newsletter, just email them with names, function and date through our website www.nutrsci.illinois.edu.



The Lasker Family:
Denise, Michael
and Isaac

ALUMNI UPDATES AND EMAIL ADDRESSES

1970

Philip Reeves, Ph.D. passed away in April 2009 from Leukemia.

1972

George Klatt, M.S. is retired and lives in Chicago, IL.

Eric Lien, Ph.D. Biochemistry, UIUC, former External Advisory Committee member, received a College of ACES Service Recognition Award.

1973

Delia Protacio, M.S. is a retired R.D. (clinical) and lives in California. (protad23@dslextreme.com)

1975

Nalini Vilas, Ph.D. is retired and living in Lombard, Illinois.

1982

Gilbert Boissonneault, Ph.D. continues as a professor in the Department of Physician Assistant Studies at the University of Kentucky in Lexington. He has been with the University of Kentucky for 23 years. (gaboiss@uky.edu)

1983

Edward Basgall, Ph.D. is currently employed as Microscopy Manager in the Department of Materials Science and Engineering at Drexel University. (ejb1176@gmail.com)

Dale Schmeisser, Ph.D. is self employed as a nutrition consultant and currently resides in Iron Mountain, MI. (dalschmeisser@yahoo.com)

1984

Michael Keenan, Ph.D. is employed at Louisiana State University as an Associate Professor, and is currently working with a group researching dietary resistant starch. They just had a key manuscript, addressing the metabolizable energy value of Hi-Maize 260 using two different methods, accepted by the *Journal of Agricultural and Food Chemistry*. (mkeenana@agctr.lsu.edu)

1984 (cont.)

Barbara Kochanowski, Ph.D. retired from Procter & Gamble in December 2008 and is currently Vice President of Regulatory Affairs with the Consumer Healthcare Products Association in Washington, D.C. (bkochanowski@msn.com)

1989

Denise King, Ph.D. is Associate Director, Nutrition Coordinating Center, School of Public Health, Division of Epidemiology at the University of Minnesota. (deniselking@comcast.net)

1990

Keith Garleb received the ACES Alumni Association Award of Merit. (keith.garleb@abbott.com)

1991

Tracy (Tasker) Chivari, M.S. has moved to Shaker Heights, OH. (ttchivari@gmail.com)

1992

James Burns, M.S. is currently employed with the Institute for Health Research & Policy, University of Illinois at Chicago as a Visiting Research Specialist. (jimdiet@gmail.com)

1993

Jennifer Orlet Fisher, Ph.D. is now an Associate Professor for the Center for Obesity Research and Education at Temple University in Philadelphia, PA. (jofisher@temple.edu)

Courdjo Lamboni, Ph.D. was promoted to Vice-Dean of Faculty of Science, Biochemistry/Nutrition for the University de Lome – Togo. (raccoulamboni@gmail.com)

ALUMNI UPDATES AND EMAIL ADDRESSES

1994

Sean Adams, Ph.D. is currently a Research Physiologist, USDA-Agricultural Research Service, Western Human Nutrition Research Center (WHNRC) Research Leader, Obesity & Metabolism Research Unit and Adjunct Assistant Professor, Department of Nutrition with the University of California. He was also selected as an ILSI North American Future Leader. (sean.h.adams@ars.usda.gov)

Gregory Paul, Ph.D. is currently employed at Solae as the Director of Global Marketing and Strategy in St. Louis, MO. (glpaul@charter.net)

1995

Brent Flickinger, Ph.D. is employed with Archer Daniels Midland in the Office of Compliance and Ethics as Senior Manager, Nutritional Science. He has been elected Chair of American Heart Association Industry Nutrition Advisory Panel and has received the ILSI North American Movers and Shakers Award. He has three children Samuel (9), Hannah (8), and Erika (5). (brezan@excite.com)

1997

Hong-Yu Teng, M.S. is currently at the Northwest Community Hospital in Arlington Heights, IL as a staff anesthesiologist. He has three children Michael (16), Shelly (12), and Chris (6). (hteng17@hotmail.com)

1998

Joshua Anthony, Ph.D. is currently employed with Mead Johnson Nutrition as Director, Global Infant Category, Department of Research and Development in Evansville, IN. He received his MBA with honors from Vanderbilt University in May 2009. (joshua.anthony@mjn.com)

2000

Beth (Reason) Flickinger, Ph.D. is currently employed with P&G Pet Care as Senior Scientist, Technology Development located in Lewisburg, OH. She is a member of ASAS, ASN, ADA, and the Obesity Society. Beth earned a Certificate of Training in Adult Weight Management in November 2008 and her adopted daughter, Alexis Morgan, was born on July 14, 2008. (flickinger.ea@pg.com)

Deshanie Rai, Ph.D. is employed with Mead Johnson Nutrition as Senior Principal Scientist, Global Scientific Affairs in Evansville, IN. Rai is Chair of the Early Nutrition Committee, ILSI and an active participant in the Women's Affinity Network "Work-Life Balance" team. She was an invited speaker at an NIEHS symposium on "Early Risks Determinants and Later Life Outcomes: An Industry Perspective" December 2009 and guest speaker at Columbia Presbyterian Children's Hospital, New York, "Functional components of human milk: Relevance to infant health and development" April 2009. She has also started playing semi-professional badminton again after an eight year break. (deshanie.rai@mjn.com)

2001

Mary Dean Coleman-Kelly, M.S. continues her employment at the Penn State University as Assistant Professor in the Department of Nutritional Sciences. (mdc15@psu.edu)

Anna Keck, Ph.D. is currently employed at Carle Foundation Hospital as Executive Director in the Research Institute. (anna.keck@carle.com)

2002

Lisa Tussing-Humphreys, M.S. is currently employed by the USDA-ARS as a Research Nutritionist in the Southern Regional Research Center located in Baton Rouge, LA. She was awarded the Kamath Award – UIC 2009 and received her Ph.D. May 2009 at UIC Department of Kinesiology and Nutrition. (lisa.tussing@ars.usda.gov)

2003

Coryn Commare, M.S. continues to be employed as a Pediatric Clinical Nutrition Specialist with Abbott Nutrition R&D, Pediatric Nutrition Science and Research, Columbus, OH. (coryn.commare@abbott.com)

Christopher Wharton, M.S. is Assistant Professor at Arizona State University in the Department of Nutrition. He has been appointed to the Board of Directors for the American Dietetic Association. (christopher.wharton@asu.edu)

Susan Zaripheh, Ph.D. is a Senior Nutrition Scientist at SaraLee Corporation in Downers Grove, IL. (susan.zaripheh@saralee.com)

2004

Jamie Baum, Ph.D. is currently the Nutritionist and Claim Manager for the Department of Baby Nutrition at Danone Research in the Netherlands. She is President-elect of the Dannon Institute's Nutrition Leadership Institute and the ASN's Energy and Macronutrient Metabolism RIS industry representative. (jamie.baum@danone.com)

Anne (Bartholome) Falk, Ph.D. is the Medical Liaison for Medical Affairs at Daiichi Sankyo, Inc. in Parsippany, New Jersey. (afalk31@hotmail.com)

Ann Chen, Ph.D. is currently residing in Cerritos, CA. (acchen7@yahoo.com)

Kenya Thomas, M.S. is currently employed by the University of Illinois Extension as a Science Educator. She will enter her second year of medical school at UIC. (krthoma1@illinoisalumni.org)

Lauren Petr, M.S. is a Dietary Manager for The Heritage at Brentwood in Brentwood, TN. She is President of Nashville District Dietetics Association and was awarded Emerging Dietitian of the Year. (elpetr77@yahoo.com)

ALUMNI UPDATES AND EMAIL ADDRESSES

2005

Cheryl Dikeman, Ph.D. is continuing her employment as the Director of Comparative Nutrition at Omaha's Henry Doorly Zoo in Omaha, Nebraska. Her professional activities include: Associate Editor for the *Journal of Zoo and Wildlife Medicine*, Member of the American Society of Animal Sciences, Association of Zoos and Aquariums, Nutrition Advisory Group to AZA, American Society of Mammalogists, Comparative Nutrition Society and Nutrition Advisor for Felid Taxonomic Advisory Group and Antelope Taxonomic Advisory Group. (cheryld@omahazoo.com)

2006

Nancy Correa-Matos, Ph.D. is an Assistant Professor of Nutrition, Department of Nutrition and Dietetics for the University of North Florida in Jacksonville. Her professional activities include the ASPEN-Task Force Committee for CNW 2010, Executive Board for the Jacksonville Dietetic Association, and Chair, Nominating Committee-ADA-LAHIDAN (American Dietetic Association - Latinos and Hispanics in Dietetics and Nutrition). She is Co-Editor of the Florida Dietetic Association Manual of Medical Nutrition Therapy - Spanish Version, Co-Author of the book "Latino Food Lovers' Glossary", Collaborator author in "The Diet Selector"



book and Reviewer in Spanish version of ADA Choose Your Foods: Exchange Lists for Meal Planning. She also has two teenagers, one in middle school and one in high school. (See above photo) (ncorrea@unf.edu)

2007

Kristy Powell, M.S. is employed at the Veterans Affairs Illiana Health Care System as a Clinical Dietitian, Danville, IL. (kspoell@gmail.com)

Nelson Reppert, M.S. is a Clinical Dietitian for the Swedish Covenant Hospital in Chicago. His accomplishments include: Publication of dietetic internship research: **Reppert A**, Steiner B, and Chapman-Novakofski K. 2008. "Metabolic syndrome and associated risk factors in Illinois" *Am J Health Promotion* 23:130-138 and featured in April 2009 issue of Woman's Day Magazine and March 2009 issue of Body+Soul Magazine. Publication of graduate work: **Reppert A**, Yousef GG, Rogers RB, and Lila MA. 2008. "Isolation of radiolabeled isoflavones from kudzu (*Pueraria lobata*) root cultures" *J Ag Food Chem* 56:7860-7865. He also earned a Certificate of Training in Adult Weight Management from American Dietetic Association/Commission on Dietetic Registration. (reppert@illinoisalumni.org)

2008

Kristin (Reifsteck) Faust, M.S. is a Nutrition Instructor at Parkland College; Visiting Research Specialist RD Program, Food Science and Human Nutrition at UIUC and Interim Managing Editor of the *Journal of Nutrition Education and Behavior*. (kristin.faust@gmail.com)

Brian Lindshield, Ph.D. is an Assistant Professor at the Kansas State University in the Department of Human Nutrition. He attended the Wakonse Teaching Conference and purchased a house in Manhattan, KS. (blindsh@k-state.edu)

Daina Mallard, M.S. is a Dietetic Intern with OSF Saint Francis Medical Center in Peoria, IL. (mallard.dm@gmail.com)

Chad Stroud, Ph.D. is doing a post-doc at University of Burgandy (Université de Bourgogne) in Dijon, France. (chadstroud@gmail.com)

2009

Dana Ghareeb, M.S. is the Nutrition Ambassador in the Organic Department for Al Yasra Food Co located in Kuwait. She will be teaching an introductory class entitled Nutrition & Health at the American University of Kuwait as an adjunct professor and will be seeing patients in a weight loss clinic twice a week. She is a volunteer for CALL (Create with Awareness and Love), which organized an anti-discrimination campaign titled "Celebrating Differences" in Kuwait and is the mother organization for K4K (Kuwait for Kenya) where volunteers built a school and dining hall in Mombassa, Kenya as a donation from the organization. (ghareeb.d@gmail.com)

Denise Lasker, Ph.D. is currently residing in Sacramento, CA and is looking for a teaching position. Her son, Isaac, is one year old. (denise.lasker7@gmail.com)

Christina Sherry, Ph.D. is a Postdoctoral Research Fellow for the Life Sciences Institute at the University of Michigan in Ann Arbor. She received the Outstanding Alumni Award from Bluffton University in 2008. Her research strides include: "Behavioral recovery from acute hypoxia is reliant on leptin" **Sherry CL**, Kramer JM, York JM, Freund GG. *Brain Behav Immun*. 2009 Feb, 23(2):169-75 and "Accelerated recovery from acute hypoxia in obese mice is due to obesity-associated up-regulation of interleukin-1 receptor antagonist" **Sherry CL**, Kim SS, Freund GG. *Endocrinology*. 2009 Jun;150(6):2660-7. After completing her Ph.D., she took 2 months to travel to NY, MA, PA, and MI. She also traveled to Edinburgh, Inverness and the Isle of Skye in Scotland in August. (clsherry@gmail.com)

Victoria Vieira, Ph.D. is a Postdoctoral Fellow with Tufts University in the Jean Mayer USDA Human Nutrition Research Center on Aging; and was elected as the Postdoctoral Fellow on the ASN Nutritional Sciences Council. (vicki.vieira@tufts.edu)

**College of Agricultural, Consumer
and Environmental Sciences
Division of Nutritional Sciences
905 S. Goodwin Avenue
Urbana, IL 61801**

**NON-PROFIT ORGANIZATION
U.S. POSTAGE PAID
PERMIT #75
CHAMPAIGN, IL 61820**